

sassa

frühjahr sommer spring summer printemps été 2025

SASSA S E L E C T I O N



BEAUTIFUL CLASSIC



24349 B-D | 75-95

34349 38-46

24350 B-E | 75-95

44349 38-48

24349 B-D | 75-95

34349 38-46



SHINY STRIPE



24455 B-D | 75-95

34455 38-46

24456 B-E | 75-95

44455 38-48

24456 B-E | 75-95

34455 38-46



GORGEOUS SUMMER



24453 B-D | 75-95

34453 38-46

24454 B-E | 75-95

44453 38-48

24453 B-D | 75-95

44453 38-48





24425 B-E | 75-95

34424 38-46



BEAUTIFUL ROSE



24425 B-E | 75-95

34424 38-46



FLEXICUP®
- SPACER -



24424 B-E | 75-95

44424 38-48



24426 B-E | 75-95

44426 38-48

DOT & BLOSSOM



FLEXICUP®
-SPACER-



24426 B-E | 75-95

34426 38-46

24427 B-E | 75-95

44426 38-48

28358 B-E | 75-95

38358 38-46



SENSUAL BEAUTY



FLEXICUP®
- SPACER -



18358 B-D | 75-95

38358 38-46

28358 B-E | 75-95

48358 38-48

LOVELY SECRET



FLEXICUP®
- SPACER -



24790 B-F | 75-100

36089 38-46

25790 B-E | 75-95

47889 38-48

24790 B-F | 75-100

36089 38-46



SPARKLING LIGHT



14457 B-D | 75-95

34457 38-46

24457 B-E | 75-95

44457 38-48

24457 B-E | 75-95

34457 38-46





14457 B-D | 75-95

44457 38-48

SPARKLING LIGHT



14457 B-D | 75-95

34457 38-46

24457 B-E | 75-95

44457 38-48

TITEL | 02 | 03 | BEAUTIFUL CLASSIC



24349 | Schalen-BH / paddes bra /
SG paddé
B-D | 75-95



24350 | Bügel-BH / wire bra /
SG avec armatures
B-E | 75-95



34349 | Panty / shorty
38-46



44349 | Slip / brief
38-48

04 | 05 | SHINY STRIPE



24455 | Schalen-BH / paddes bra /
SG paddé
B-D | 75-95



24456 | Bügel-BH / wire bra /
SG avec armatures
B-E | 75-95



34455 | Panty / shorty
38-46



44455 | Slip / brief
38-48

06 | 07 | GORGEOUS SUMMER



24453 | Schalen-BH / paddes bra /
SG paddé
B-D | 75-95



24454 | Bügel-BH / wire bra /
SG avec armatures
B-E | 75-95



34453 | Panty / shorty
38-46



44453 | Slip / brief
38-48

■ **719** ash grey

■ **NOS 209** nude

■ **NOS 500** black

Jacquard Material / matériau jacquard:

85% Polyamid / polyamide

15% Elasthan / elastane / élasthanne

Spitze / lace / dentelle:

90% Polyamid / polyamide

10% Elasthan / elastane / élasthanne

Futter / lining / doublure:

100% Baumwolle / cotton / coton

■ **279** grape

Grundware / main material / matériel de base:

86% Polyamid / polyamide

14% Elasthan / elastane / élasthanne

Spitze / lace / dentelle:

90% Polyamid / polyamide

10% Elasthan / elastane / élasthanne

Futter / lining / doublure:

100% Baumwolle / cotton / coton

■ **276** apricot

Grundware / main material / matériel de base:

86% Polyamid / polyamide

14% Elasthan / elastane / élasthanne

Spitze / lace / dentelle:

90% Polyamid / polyamide

10% Elasthan / elastane / élasthanne

Tüll / tulle:

90% Polyamid / polyamide

10% Elasthan / elastane / élasthanne

Futter / lining / doublure:

100% Polyamid / polyamide

08|09 | BEAUTIFUL ROSE



24424 | Spacer-BH / spacer bra / SG spacer
B-E | 75-95 **FLEXICUP**
Cup Material / coupe le matériel:
90% Polyester
10% Elasthan / elastane / élasthanne



24425 | Bügel-BH / wire bra /
SG avec armatures
B-E | 75-95



34424 | Panty / shorty
38-46



44424 | Slip / brief
38-48

10|11 | DOT & BLOSSOM



24426 | Spacer-BH / spacer bra / SG spacer
B-E | 75-95 **FLEXICUP**
Cup Material / coupe le matériel:
90% Polyester
10% Elasthan / elastane / élasthanne



24427 | Bügel-BH / wire bra /
SG avec armatures
B-E | 75-95



34426 | Panty / shorty
38-46



44426 | Slip / brief
38-48

12|13 | SENSUAL BEAUTY



18358 | Soft-BH Einlage/ padded
soft cup bra / SG paddé sans armatures
B-D | 75-95



28358 | Spacer-BH / spacer bra / SG spacer
B-E | 75-95 **FLEXICUP**
Cup Material / coupe le matériel:
90% Polyester
10% Elasthan / elastane / élasthanne



38358 | Panty / shorty
38-46



48358 | Slip / brief
38-48



613 lime
NOS 100 white

Grundware / main material / matériel de base:
90% Polyamid recycled / polyamide recycled
10% Elasthan / elastane / élasthanne

Spitze / lace / dentelle:
90% Polyamid / polyamide
10% Elasthan / elastane / élasthanne

Futter / lining / doublure:
92% Polyamid / polyamide
8% Elasthan / elastane / élasthanne

729 deep sea
NOS 209 nude

Grundware / main material / matériel de base:
85% Polyamid / polyamide
15% Elasthan / elastane / élasthanne

Spitze / lace / dentelle:
90% Polyamid / polyamide
10% Elasthan / elastane / élasthanne

Futter / lining / doublure:
65% Polyamid / polyamide
35% Baumwolle / cotton / coton

411 caramel
NOS 233 pearl
NOS 500 black

Grundware / main material / matériel de base:
82% Polyamid / polyamide
18% Elasthan / elastane / élasthanne

Spitze / lace / dentelle:
90% Polyamid / polyamide
10% Elasthan / elastane / élasthanne

14|15 | RÜCKTITEL | LOVELY SECRET



24790 | Bügel-BH / wire bra / SG avec armatures
B-F | 75-100

90% Polyamid / polyamide
10% Elasthan / elastane / élasthanne



25790 | Spacer-BH / spacer bra / SG spacer
B-E | 75-95 **FLEXICUP**

85% Polyamid / polyamide
15% Elasthan / elastane / élasthanne
Cup Material / coupe le matériel:
90% Polyester
10% Elasthan / elastane / élasthanne



36089 | Panty / shorty
38-46

92% Polyamid / polyamide
8% Elasthan / elastane / élasthanne



47889 | Slip / brief
38-48

90% Polyamid / polyamide
10% Elasthan / elastane / élasthanne

- 729 deep sea
- NOS 100 white
- NOS 209 nude
- NOS 500 black

16-19 | SPARKLING LIGHT



14457 | Soft-BH Einlage / padded soft cup bra / SG paddé sans armatures
B-D | 75-95



24457 | Schalen-BH / paddes bra / SG paddé
B-E | 75-95



34457 | Panty / shorty
38-46



44457 | Slip / brief
38-48



14457 | Soft-BH Einlage / padded soft cup bra / SG paddé sans armatures
B-D | 75-95



24457 | Schalen-BH / paddes bra / SG paddé
B-E | 75-95



34457 | Panty / shorty
38-46



44457 | Slip / brief
38-48

- NOS 209 nude
- NOS 500 black

Grundware / main material / matériel de base:

80% Polyamid / polyamide
20% Elasthan / elastane / élasthanne

Futter / lining / doublure:

78% Polyamid / polyamide
22% Elasthan / elastane / élasthanne

SASSA wird noch nachhaltiger

Das Thema Nachhaltigkeit hat bei Sassa große Bedeutung. In Zeiten des Klimawandels steht für uns neben Mode zu fairen Preisen eine nachhaltige und umweltfreundliche Produktion an erster Stelle.

SASSA becomes even more sustainable

The topic of sustainability is very important for Sassa. In times of climate change, sustainable and environmentally friendly production is our top priority in addition to fashion at fair prices.



SASSA uses outer packaging sleeves which consist exclusively of recyclable polyester.

Sustainable polyester fabrics are being used in the »Shiny Sustainable« and »Sustainable Micro« series as well as in our sports bras. These fabrics comply to the »Global Recycled Standard«. Their raw materials range from recycled PET-bottles to old fishing nets.

All cardboard boxes used in our in-house warehouse logistics are made from recycled waste paper. This also applies to packaging in online shops.

Our catalogues are printed on natural paper.

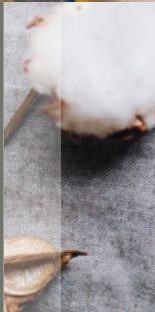
Our products are manufactured using carefully selected fabrics, lace and accessories. Our collections comply almost exclusively with the OEKO-TEX® Standard 100 and the requirements of the REACH regulation.

We also use sustainable and rapidly renewable raw materials such as bamboo, TENCEL™ Lyocell fibers und TENCEL™ Modal fibers.

For additional work on our merchandise like individual packing for our customers etc. we employ the services of the Bruderhaus-Diakonie, a workshop operated by the non-profit Gustav Werner Foundation. This workshop offers people with disabilities the opportunity to actively participate in work life.

As a member of the amfori BSCI (Business Social Compliance Initiative) SASSA and our producers commit themselves to good working conditions and responsible behavior based on the underlying code of conduct.

For more than 25 years we have maintained long-term, fair and loyal relationships with our producers.



sassa

niederlassungen / branches

Germany [Headquarter]

Sassa Mode GmbH
Mauchentalstraße 71
D-72574 Bad Urach
Phone +49 7125 1441-0
Fax +49 7125 1441-86
E-Mail info@sassamode.com
Web www.sassamode.com

Czech Republic

Sassa Mode s.r.o.
Phone +420 483 382 879
E-Mail info@sassamode.cz
Web www.sassa.cz

Slovakia

Sassa Mode s.r.o.
Phone +420 483 382 879
E-Mail info@sassamode.sk
Web www.sassa.sk

Switzerland

Sassa Mode AG
Phone +41 41 748 80 00
E-Mail info@sassamode.ch
Web www.sassamode.com



STANDARD
100



b-werk.de

shop online www.sassamode.com